



The Pink Room, with its period style and abundance of natural light, is the perfect space for a small meeting or event.

Interconnecting to the larger Argyll Room, the two venues provide the perfect combination for a reception followed by a private lunch or dinner, or a break out room during business meetings.

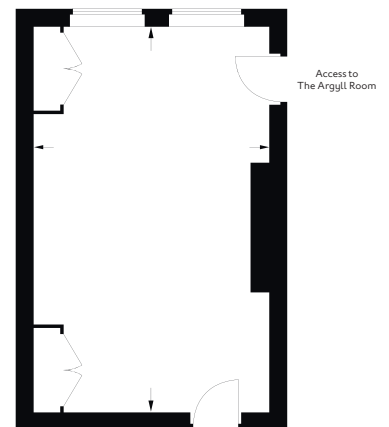
### HIGHLIGHTS

- Contemporary design with original marble fireplace
- Can be hired semi-privately, privately or linked with The Argyll Room
- Selection of meeting and private dining packages
- Bespoke menus from The Game Bird
- Natural daylight

### KEY FACTS

Dimensions: 6.26m x 3.81m / 20.5 x 12.4ft  
Total Area: 23m<sup>2</sup> / 247 ft<sup>2</sup>  
Ceiling height: 3.2m  
Adjoining Room: The Argyll Room  
Location: Ground floor

LAYOUT	CAPACITY
Oval Table	10
Round Table	8
U-Shape	-
Boardroom	8
Theatre	10
Cabaret	6
Classroom	8
Standing	14



[thestaffordlondon.com](http://thestaffordlondon.com)

[@StaffordLondon](https://twitter.com/StaffordLondon) [f TheStaffordLondon](https://www.facebook.com/TheStaffordLondon) [i thestaffordlondon](https://www.instagram.com/thestaffordlondon)  
16-18 St James's Place London SW1A 1NJ United Kingdom  
T +44 (0)20 7518 1104 E [meetingsandevents@thestaffordlondon.com](mailto:meetingsandevents@thestaffordlondon.com)